

Annual Notice of Services for Students with Disabilities Including Special Education and Protected Handicapped Students

The Philadelphia Public Schools and the Philadelphia Intermediate Unit (IU26) provide special education and related services to resident children with disabilities who are ages three (3) through twenty-one (21). The purpose of this notice is to describe (1) the types of disabilities that might qualify the child for such programs and services, (2) the special education program and related services that are available, (3) the process by which the public schools screen and evaluate such students to determine eligibility, and (4) the special rights that pertain to such children and their parents or legal guardians.

CHILDREN SERVED IN SPECIAL EDUCATION PROGRAMS

Special education services are available to children who have one or more of the following physical or mental disabilities:

- autism
- deaf/blindness
- emotional disturbance
- hearing impairment, including deafness
- mental retardation
- multiple disabilities
- orthopedic impairment
- other health impairment
- specific learning disability
- speech or language impairment
- traumatic brain injury; and
- visual impairment, including blindness
- developmental delay (in the case of a pre- school child)



DESCRIPTION OF SPECIAL EDUCATION PROGRAMS

The Public Schools/IU26 provide appropriate special education programs and related services that are:

- provided at no cost to parents;
- provided under the authority of a school entity, directly, by referral or by contract;
- individualized to meet the educational needs of the child;
- reasonably calculated to yield meaningful educational benefit and progress and designed to conform to an Individual Education Program.

Special education is designed to meet the needs of each eligible student, including specifically designed instruction conducted in the classroom, home, community settings, hospitals, institutions and othersettings.

Related services are available to students include transportation, corrective and other supportive services that help an eligible student benefit from special education. Examples include: speech pathology and audiology, psychological services, physical and occupational therapy, social work services, school health services, medical services for diagnosis or evaluation, parent counseling and education, recreation counseling services, rehabilitation counseling services and assistive technology services.

REFERRAL OF CHILDREN FOR SCREENING AND EVALUATION

The Public Schools/IU26 has procedures to identify children needing special education. Those procedures are "screening" and "evaluation." If a disability is suspected, teachers, other school personnel or parents may refer a child for screening and/or evaluation. Parents suspecting that a child may have a disability and need special education can request a screening or evaluation at any time by contacting their school principal. Screening activities include: reviewing immediately available data sources such as health records, parent interview and history; functional vision and hearing evaluations; determining the student's response to attempted remediation; and speech and language screenings are completed on request. If the screening leads to a recommendation for evaluation, the evaluation team will conduct the evaluations. No evaluations may be conducted without written parental permission. Consult your school counselor for further information.

State and federal law affords many rights and protections to children with disabilities and their parents. A summary of this rights and protections follows. Interested persons may obtain a complete written summary of the rights and protections afforded by the law, together with information about free of low cost legal services and advice, by contacting the special education coordinator or principal of the local public school.

RIGHTS AND PROTECTIONS

Prior Written Notice: The public school must notify you in writing whenever it proposes to initiate or to change the identification, evaluation, educational program or placement of a child or whenever it refuses to initiate or make a change in identification, evaluation, educational program, or placement requested by a parent. Such notice must be accompanied by a written description of the reasons for the proposal or refusal, the options considered, if any, and the reason why such options were rejected.

Consent: The public school cannot proceed with an evaluation or with the initial provision of special education and related services without the written consent of the parent. A public school may not seek a hearing to override the refusal of a parental consent to an initial placement in special education. A public school may override the lack of consent for an initial evaluation by requesting the approval of an impartial hearing officer

of judge following a hearing. If the parent fails to respond to a written request for permission to re-evaluate, however, the public school may proceed the proposed reevaluation without consent.

Protection in Evaluation Procedure: Evaluations to determine eligibility and current need for special education and related services must be administered in a manner that is free of racial, cultural, or linguistic bias. Evaluations cannot consist of a single test or assessment and testing must be a valid measure of the psychological, social, emotional or other learning characteristic or behavior that the school is using it to measure. Testing and assessment must be administered in accordance with professional standards and the criteria established by the publisher. It must be administered in the native language of the child.

Confidentiality: The records and documents that are part of the evaluation and screening process are confidential and protected under the Family Educational Rights and Privacy Act (FERPA). School districts, intermediate units, and charter schools maintain records concerning all children enrolled in the school, including students with disabilities. All records are maintained in the strictest confidentiality. Your consent, or consent of an eligible child who has reached the age of majority under State law, must be obtained before personally identifiable information is released, except as permitted under FERPA. The age of majority in Pennsylvania is 21. Each participating agency must protect the confidentiality of personally identifiable information at collection, storage, disclosure, and destruction stages. One official at each participating agency must assume

responsibility for ensuring the confidentiality of any personally identifiable information. Each participating agency must maintain, for public inspection, a current listing of the names and positions of those employees who have access to personally identifiable information. For additional information related to student records, the parent can refer to FERPA.

This notice is only a summary of the Special Education services, evaluation and screening activities, and rights and protections pertaining to children with disabilities, children thought to be disabled, and their parents. For more information or to request evaluation or screening of a public or private school child contact the responsible school entity listed below. For preschool age children (ages 3-5), information, screenings and evaluations requested, may be obtained by contacting Elwyn SEEDS at 215-222-8054.

MORE INFORMATION

Detailed printed information about available special education services and programs and Philadelphia/IU26 policies are available from the School District/IU26 upon request. Anyone interested should contact the principal of the

child's school. Information and communications are in English, but will be provided in the native language or other modes of communication used by parents, if appropriate. More information can also be found on the School District of Philadelphia's website: <https://www.philasd.org/specializedservices/>

Office of Specialized Services (OSS)

440 N. Broad Street, 2nd Fl. Phila., PA 19130 | P: 215-400-4170 | Parent #: 267-784-9274

Charter, Partnership, and New School Office

Email: charters@philasd.org | Main office phone: 215-400-4090

Learning Network 1

South Phila. High | 2101 S. Broad Street, Phila., PA 19148 | P: 215-400-5043

Learning Network 2

Middle Years School | 4725 Fairmount Ave., Phila., PA 19139 | P: 215-400-5043

Learning Network 3

440 N. Broad Street, Phila., PA 19130 | Suite 210 | P: 215-400-6147

Learning Network 4

440 N. Broad Street, Phila., PA 19130 | Suite 210 | P: 215-400-6147

Learning Network 5

Rivera Building | 2603 N. 5th Street, 5th floor, Phila., PA 19133 | P: 215-400-8050

Learning Network 6

Hill-Freedman | 1100 E. Mt. Pleasant Ave., Phila., PA 19150 | P: 215-400-8052

Learning Network 7

Grover Washington M.S. | 201 E. Olney Ave., Phila., PA 19120 | P: 215-400-8054

Learning Network 8

4101 Chalfont Drive, Phila., PA 19154 | P: 215-400-8056

Learning Network 9

Lincoln High | 3201 Ryan Ave., Phila., PA 19136 | Suite 206 | P: 215-400-5289

Learning Network 10

Catherine Annex | 6900 Greenway Ave., 3rd Floor, Phila., PA 19143 | P: 215-400-6113

Learning Network 11

Rivera Building | 2603 N. 5th Street, 5th floor, Phila., PA 19133 | P: 215-400-6113

Learning Network 12

Catherine Annex | 6900 Greenway Ave., 5th Floor, Phila., PA 19143 | P: 215-400-5361

Learning Network 13

440 N. Broad Street, Phila., PA 19130 | Suite 210 | P: 215-400-5361

Acceleration Network

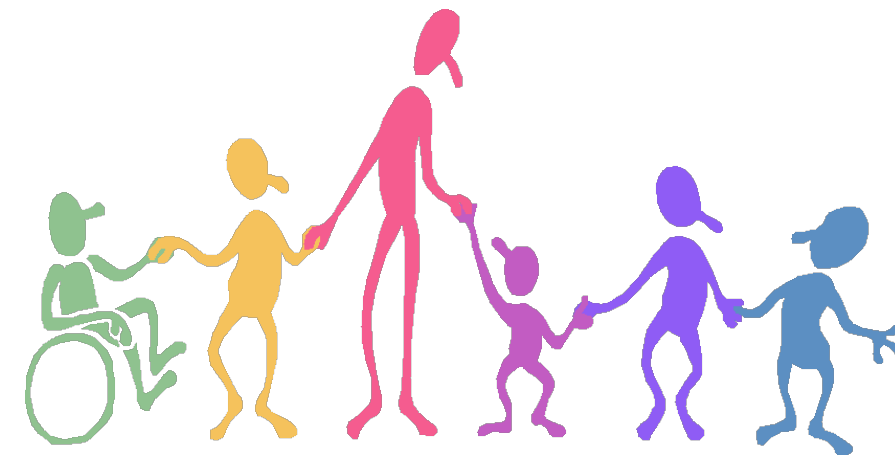
McMichael School | 3543 Fairmount Ave., Phila., PA 19104 | P: 215-400-5289

Innovation Network

440 N. Broad Street, Phila., PA 19130 | P: 215-400-6792

Opportunity Network

440 N. Broad Street, Phila., PA 19130 | P: 215-400-6385



THE SCHOOL DISTRICT OF
PHILADELPHIA